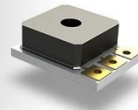


## Bourns® Sensors and Controls

The Sensors & Controls division of Bourns, Inc. specializes in position and speed sensors, environmental sensors, and user input controls. For over 50 years, the Bourns Sensors & Controls division has excelled at reliability, performance and customization.

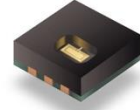
### Environment



BPS130



BPS110/120



BPS230

BPS environmental sensors are based on innovative MEMS technology which provides extremely accurate pressure and humidity readings in a miniature package size. Bourns® environmental sensors are fully calibrated and compensated with analog or digital output. Typical applications include transportation, medical (low/medium risk)\*, light to medium industrial, and HVAC systems.

### Measurement



3500



3549



AMM20B

A rotary position sensor translates angular mechanical position to an electrical signal. Position and speed sensors can be used in applications where a user needs to measure angular change due to linear movement. Typical applications include linear actuators, rotary actuators, draw wire sensors, small engines, robotics, and medical equipment.

### User Input/HMI



EM14



51/53



PRS11S



PEC11L

User input controls can be used in applications where a user needs to control a variable output such as a frequency, speed or volume control. Base technologies range from optical encoders to contacting potentiometers. Typical applications include test and measurement equipment, consumer electronics, professional audio and video, and medical equipment.



Buy now.

\* Bourns® products have not been designed for and are not intended for use in "lifesaving," "life-critical" or "life-sustaining" applications nor any other applications where failure or malfunction of the Bourns® product may result in personal injury or death. See Legal Disclaimer Notice on the last page of this document, and at [www.bourns.com/docs/legal/disclaimer.pdf](http://www.bourns.com/docs/legal/disclaimer.pdf).